

March 2026 Community Update

We're keen to keep the community informed. Anyone can receive email newsletters by signing up at bialawindfarm.com/subscription or at gullenrangewindfarm.com/subscription. No longer wish to receive newsletters? Please contact us to remove your details from our mailing list.

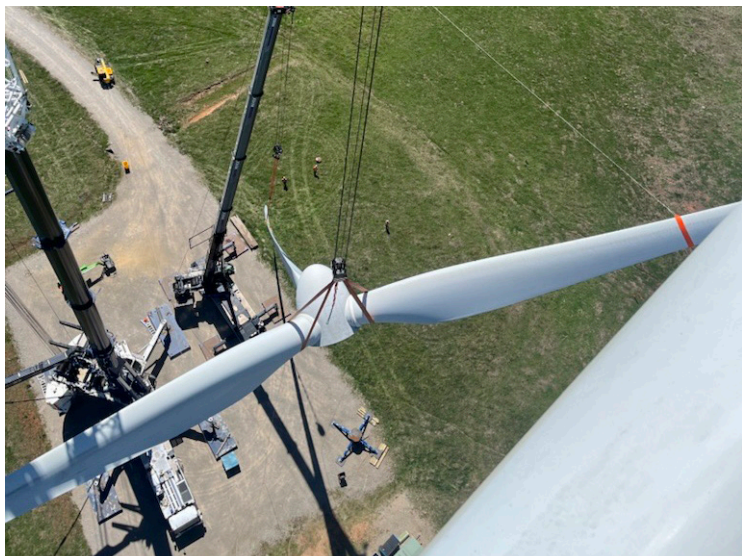
Project Update

It's been a busy start to 2026 at both Biala and Gullen Range Wind Farms, with teams focused on keeping turbines operating safely and efficiently.

At Biala Wind Farm, following the detection of asbestos in some internal lifting device brake pads last year, replacement works have now been completed and all servicing activities have returned to normal.

At Gullen Range Wind Farm, some of the site's 2.5MW turbines remain temporarily restricted while similar replacement works are completed. The risk to workers and the community remains very low, and all work is being carried out with specialist contractors and under strict safety guidance. Servicing of the site's 1.5MW turbines, which have been unaffected, continues as normal.

Also at Gullen Range Wind Farm, generator replacement works have commenced on six of our 1.5MW turbines. This extensive work requires a number of cranes to be delivered to site, with the change out of generators taking approximately one week per turbine to complete. These works are an important part of the wind farm's maintenance and help to ensure the continued optimal performance of turbines.



Above: The blade hub is removed from one of the turbines to make way for the generator replacement



Above: Multiple cranes are used in the generator replacement works

We acknowledge the Gundungurra people as the Traditional Custodians of the lands upon which Gullen Range Wind and Solar Farm and Biala Wind Farm operate and their continuing connection to Country. We pay our respects to Aboriginal and Torres Strait Islander cultures and to Elders past, present and emerging.

Contact Us

bialawindfarm.com
gullenrangewindfarm.com
gullensolarfarm.com
Level 21, 1 York Street, Sydney, NSW, 2000



Goulburn Railway Bowlers annual Rose Tournament

A touch of rain didn't stop the 2026 Goulburn Railway Bowlers annual Rose Tournament, with women's and men's triples teams from across NSW competing in two-day events across 24-27 February. Gullen Range Wind Farm was proud to once again support the event, with Site Manager Andrew Sinclair attending to present prizes. More than \$4,500 in prize money was shared across six winning men's and women's teams. Congratulations to all the winners and to the Goulburn Railway Bowling Club for hosting another great event.



Above: Wind and Solar Farm Site Manager, Andrew, with the men's Rose Tournament winners from Taralga and Goulburn.

Crookwell Show 2026

Gullen Range Wind and Solar Farm was proud to once again sponsor the annual Crookwell Show. Held on 7-8 February, the 147th event was another spectacular showing of community pride and agricultural prowess. We were proud to provide the face painting for the weekend, with many eager young ones enjoying this free activity.

This year, we were pleased to support the Crookwell Hospital Auxiliary as our charity of choice, with a donation of \$750. The Auxiliary provide invaluable services to the local community in their time of need and it was a pleasure to be able to support such a worthy cause.

We look forward to another incredible Show next year!

We acknowledge the Gundungurra people as the Traditional Custodians of the lands upon which Gullen Range Wind and Solar Farm and Biala Wind Farm operate and their continuing connection to Country. We pay our respects to Aboriginal and Torres Strait Islander cultures and to Elders past, present and emerging.

bialawindfarm.com
gullenrangewindfarm.com
gullensolarfarm.com
Level 21, 1 York Street, Sydney, NSW, 2000

Contact Us

Community Connections

Biala Wind Farm and Gullen Range Wind and Solar Farm remain committed to open communication and collaboration with the community.

Community Consultative Committee (CCC) meetings continue to provide a forum for discussion and feedback. The next Gullen Range Wind Farm CCC meeting is planned for 29 April 2026 commencing at 4pm at Bannister Hall.

We encourage community members interested in becoming representatives on the Committee to reach out to the CCC Chairperson. Further details can be found on our website.

Spreading Christmas Cheer with Meals on Wheels

To wrap up 2025, the Biala Wind Farm team was proud to again support Meals on Wheels NSW in Crookwell, helping deliver 22 Christmas hampers filled with local treats to community members. Thoughtfully curated by the IGA Crookwell team, these hampers bring a little extra joy to those in need.

This initiative has become a valued tradition, and the team looks forward to continuing to support local programs throughout 2026.



Above: Meals on Wheels volunteers with a representative from IGA Crookwell and some of the lovely hampers



2026/27 Gullen Range Wind Farm Community Fund - now open for applications!

This year's Gullen Range Wind Farm Community Fund is now open for applications. Community groups and not for profit organisations that are seeking funding to support initiatives to benefit the community within 10km of Gullen Range Wind Farm are invited to apply.

Application forms can be downloaded through the Upper Lachlan Shire Council [website](#).

Applications close at 5pm on Friday, 8th of May. For more information, please visit [our website](#).

More than \$750,000 in grants have been awarded to local community groups and initiatives since the Community Fund commenced in 2016. We look forward to seeing the applications this year and to continuing our support of great local initiatives that make the region truly special.

Gullen Range Wind & Solar Farm Public Tours for 2026

We are proud to once again host public tours of Gullen Range Wind and Solar Farm, providing a unique opportunity for the community to come and see how we operate day to day.

While our first tour for the year has quickly booked out, our second tour is scheduled for 20 May. Keep an eye on our [website](#) for bookings opening soon, or contact us to be added to the waitlist.

Proud to support the Green Devils

Biala Wind Farm is proud to once again be a major sponsor of the Crookwell Senior Green Devils football club. With the season kicking off in just a few short weeks, we're excited to once again get behind the teams for another fantastic season. Go the Devils!



Unlock up to \$8,620 for home energy efficiency with the CLEP

Residents living within 5km of Gullen Range Wind Farm can apply for Clean Energy Program (CLEP) funding to support energy efficiency upgrades to eligible properties such as installation of solar panels, batteries or solar hot water systems.

The first step is a Stage 1 home energy audit, followed by Stage 2 funding of up to \$8,620 for eligible improvements. Stage 1 can be applied for year-round, while Stage 2 applications are accepted during four funding rounds throughout the year.

For more information on the Program, please visit our [website](#) or contact us and we would be happy to assist.

Did you know...

Long before modern wind turbines and solar panels, Indigenous Traditional Owners used renewable energy every day. The sun, wind and seasonal knowledge guided food gathering, land care and wildlife protection. Fire was carefully managed to renew grasslands, support animal habitats and encourage healthy ecosystems—an early form of sustainable land management that worked with nature, not against it.

Today's wind and solar farms continue this tradition of harnessing natural forces while helping protect local wildlife and landscapes for future generations.

We acknowledge the Gundungurra people as the Traditional Custodians of the lands upon which Gullen Range Wind and Solar Farm and Biala Wind Farm operate and their continuing connection to Country. We pay our respects to Aboriginal and Torres Strait Islander cultures and to Elders past, present and emerging.

Contact Us

bialawindfarm.com
gullenrangewindfarm.com
gullensolarfarm.com
Level 21, 1 York Street, Sydney, NSW, 2000

