

BIALA WIND FARM

Newsletter

February 2020

We're keen to keep you informed on what's happening with Biala Wind Farm. During the construction phase, we will provide updates on the three main construction areas, as shown in the map below. To receive future newsletters via email, please sign up at bialawindfarm.com/subscription.

Transportation of oversize turbine components

Biala Wind Farm is currently being constructed 6km south of Grabben Gullen on Grabben Gullen Road, 8km east of Biala and 14.5km south west of Crookwell in the Southern Tablelands of NSW. Transportation of the 31 turbines to the project site is required for the ongoing construction of the project.

Delivery of wind turbine components is expected to commence in mid March. The deliveries are expected to arrive in Goulburn and travel through Crookwell bypassing the township between 6am - 10am Monday to Saturday over the next six months. Delays are expected along the Goulburn-Crookwell Rd, Grange Rd, Cullen St, Kialla Rd, Range Rd and along Grabben Gullen Rd. We will make every effort to minimise disruptions during the six month period. Please consider travelling by alternative routes where possible during these times to avoid delays.

Residents can register for the FREE text message service for updates on the delivery schedule, temporary road closures and diversions, traffic control and general information on the works being undertaken. We will provide further delivery details on www.bialawindfarm.com, our newsletter subscription and through local newspaper advertisements.

Area One - Biala Wind Farm site

Area One is the wind farm site, located to the west of Grabben Gullen Road.

We have now poured concrete for all 31 wind turbine foundations and we are working on the "hardstand" areas for the laydown of turbine components. Approximately 80% of the access tracks and hardstands have been gravelled. More than half of the underground cabling inside the wind farm site has now been installed. The two most southern wind turbines will connect to the rest of the wind farm via a 400m section of overhead electrical powerline. The three poles for that powerline have been installed.

Several junctions in Crookwell have been widened in preparation for the delivery of wind turbine components to the wind farm and a trial blade delivery has occurred. The trial uses a long trailer to simulate a blade delivery, but no blade is actually transported.

The first two shipments of wind turbine components have arrived in Port Kembla harbour and are currently being stored there. There will be four shipments in total.



Installation of cabling between the turbines

The next steps in Area One will be continuing to install electrical cabling between the turbine locations and to start delivering wind turbine components from Port Kembla to the wind farm. The oversize wind turbine components are currently scheduled to be delivered to the Biala Wind Farm site in mid-March.

Area Two - Extension to Gullen Range Wind Farm substation

The Gullen Range Wind Farm substation is located in Bannister and is being extended to allow the Biala Wind Farm to connect to the national electricity grid. Civil works in the substation area are now complete. The main electrical equipment is now installed. Energisation and commissioning of the substation extension is scheduled for April 2020. There will be a week-long outage for Gullen Range Wind Farm during commissioning. You may notice the Gullen Range turbines will be stopped during the commissioning period.

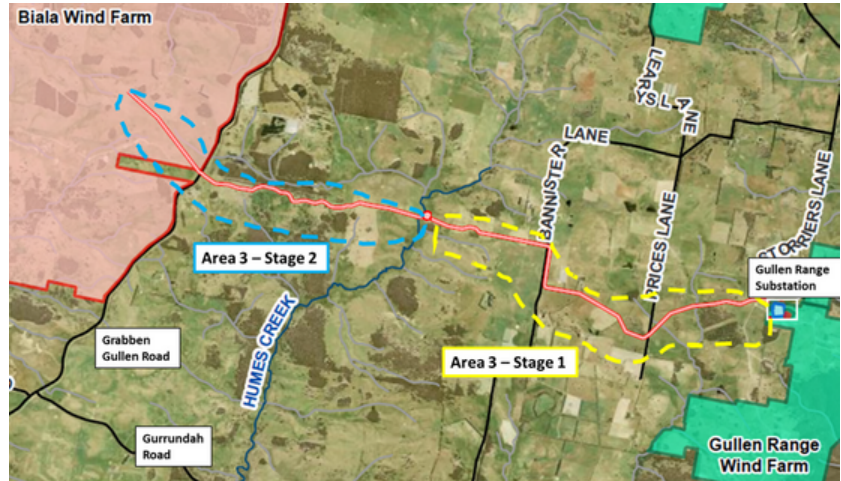
Area Three on next page.

Area Three - Electrical transmission line between Biala Wind Farm and Gullen Range Wind Farm

Biala Wind Farm will connect to the electricity grid via underground electricity cables from the Gullen Range Wind Farm substation at Bannister. The transmission line will be approximately 12km long and will consist of four electrical cables which will be installed in two stages of works as shown below.

Trenching works on the transmission line have progressed well and we now have all of the cables installed up to Grabben Gullen Road, apart from the underboring of Humes Creek which will follow in April 2020.

Some further soil and vegetation re-instatement works will continue on both sides of Humes Creek, as well as final cable jointing. The western end of the transmission line works finishes inside the wind farm site (Area One) and cable laying is ongoing in this area.



Area Three work stages

Community Consultative Committee (CCC)

The next CCC meeting will be held on Tuesday 31 March 2020, from 6pm - 8pm at Grabben Gullen Hall. If you have any questions about the project, members of the CCC can raise them on your behalf at these meetings. Minutes of all previous meetings are available on our website to read or download. If you are interested in observing a meeting, please register your interest with the independent chairperson, Nic Carmody on 0429 354 582 or email nic.carmody@bigpond.com

BJCE thanks local community for their ongoing support for the community fundraiser BBQs

BJCE Australia teamed up with the Grabben Gullen Rural Fire Service on Wednesday 19th of february for our monthly fundraising BBQ outside the Crookwell IGA. The BBQ raised over \$500 for the Grabben Gullen Rural Fire Service (RFS). BJCE Australia would like to thank all those who stopped for a sausage, chatted with us and made donations to the Grabben Gullen RFS. The next community BBQ will be held on Thursday 12 March 2020.

About the Project

Biala Wind Farm is located approx. 6km south of Grabben Gullen on Grabben Gullen Road. It is owned by BJCE Australia, who also own Gullen Range Wind Farm and Gullen Solar Farm. Biala Wind Farm is proposed to have 31 turbines and was awarded a Development Approval in April 2017 by the NSW Planning Assessment Commission. It will connect to the electricity grid via underground electricity cables from the Gullen Range Wind Farm substation at Bannister. Construction of Biala Wind Farm will take approx. 18-months to complete. It is expected the wind farm will commence exporting energy to the national grid in July 2020 and will be completed in November 2020.

Current Project Timeline

We update this in each of our monthly newsletters

-	Roadworks to Range Road	Awaiting sign off from Council. BJCE currently completing final seal and road safety measures.
Area 1	Onsite civil and electrical works	Now to May 2020
	Delivery and erection of wind turbines	March 2020 to September 2020
	Commissioning of wind turbines	April 2020 to November 2020
Area 2	Substation extension	Now to April 2020
Area 3	Installation of underground electrical transmission line	Now to March 2020

To receive future newsletters sign up at bialawindfarm.com/subscription