

BIALA WIND FARM

Newsletter

January 2020

We're keen to keep you informed on what's happening with Biala Wind Farm. Now we are in the construction phase, we will provide updates on the three main construction areas, as shown in the map below. To receive future newsletters via email, please sign up at bialawindfarm.com/subscription.

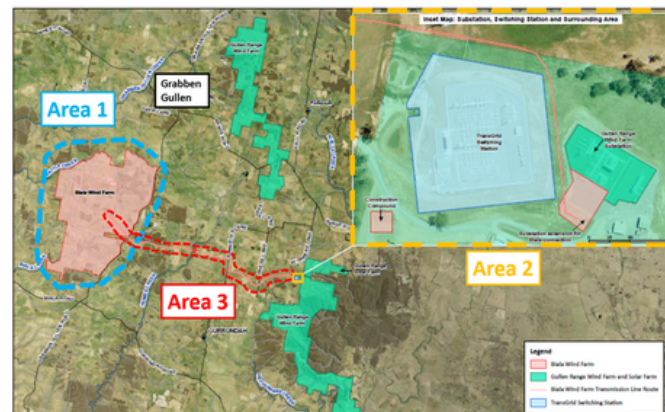
Area One - Biala Wind Farm site

Area One is the wind farm site, located to the west of Grabben Gullen Road. We have now poured the concrete for all 31 of the wind turbine foundations. Stripping and sub-grade preparation has been completed for all the access tracks and approximately 60% have been gravelled. We are also preparing the "hardstand" areas around the foundations where the turbine components will be temporarily laid down before they are erected using a crane.

A trial run was undertaken with one of the trailers which will be used to deliver turbine blades to confirm that the slopes and curves of the access tracks on site are ok. We also started to install the cabling which will connect the turbines to the electrical transmission line described in Area Three.

The next steps in Area One will be to install the rest of the cabling between the turbine locations and to start delivering turbine components. The first deliveries of turbine components arrived in Port Kembla this month and are currently scheduled to be delivered to the Biala Wind Farm site in the week commencing 17th February 2020.

We will be providing project neighbours and the community with fact sheets about our turbine deliveries. We will also be providing residents with some delivery notifications. You can register for these updates by emailing us on info@bialawindfarm.com or call 1800 370 045 to leave a message and we will call you back to subscribe you for this service.



Project area map

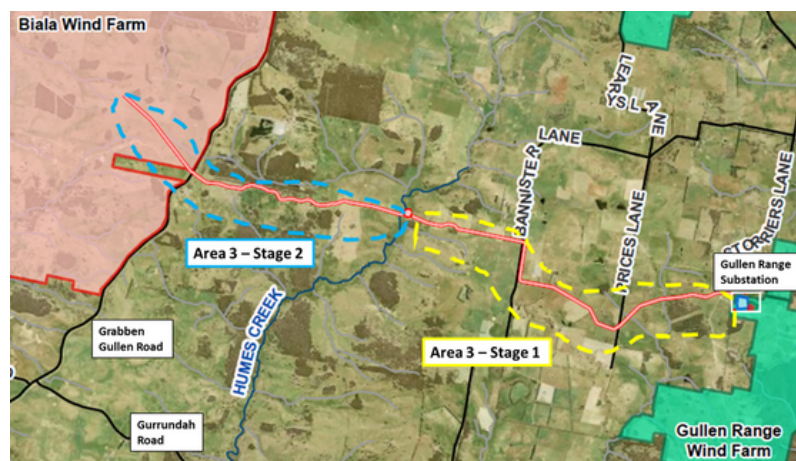
Area Two - Extension to Gullen Range Wind Farm substation

The Gullen Range Wind Farm substation is located in Bannister and is being extended to allow the Biala Wind Farm to connect to the national electricity grid. This month we continued to undertake civil works such as installing drainage and constructing footings to facilitate the installation of additional electrical equipment. The majority of electrical equipment is now installed in the substation extension, with energisation and commissioning expected for early April 2020.

Area Three - Electrical transmission line between Biala Wind Farm and Gullen Range Wind Farm

Biala Wind Farm will connect to the electricity grid via underground electricity cables from the Gullen Range Wind Farm substation at Bannister. The transmission line will be approximately 12km long and will consist of four electrical cables which will be installed in two stages of works as shown below.

All four cables have now been laid for the works on the eastern side of Humes Creek (Stage 1), and trenching works will now commence on the western side of Humes Creek (Stage 2). Grabben Gullen Road has been underbored using horizontal directional drilling so there are no public roads that need to be crossed by the trenching machinery as part of this next stage. Some further soil and vegetation re-instatement works will continue on the eastern side.



Area Three work stages



Trial run with bladetrailer



Turbine blades arrive at Port Kembla



Aerial view of hardstand preparation around turbine foundation

Text Message Service

If you live nearby and are interested in receiving construction or project updates by text message to your phone, please email us on info@bialawindfarm.com or call 1800 370 045 to leave a message and we will call you back to subscribe you for this service.

Community Consultative Committee (CCC)

The next CCC meeting will be held on Tuesday 31 March 2020 from 6pm - 8pm at Grabben Gullen Hall. If you have any questions about the project, members of the CCC can raise them on your behalf at these meetings. Minutes of all previous meetings are available on our website to read or download. If you are interested in observing a meeting, please register your interest with the independent chairperson, Nic Carmody on 0429 354 582 or email nic.carmody@bigpond.com

BJCE Australia will match donations for the Grabben Gullen Rural Fire Service (RFS) at our community BBQs

We're hosting another community BBQ on 13th February. You can find us out the front of Crookwell IGA alongside Grabben Gullen RFS from 9.30am to 2pm. The RFS will be cooking the sausage sandwiches and you can grab one for a gold coin donation. 100% of all donations goes to the RFS and we match every donation dollar for dollar. Our project team will be on hand to answer any questions about our Biala Wind Farm project, which is currently under construction. You can also ask questions about our Gullen Range Wind and Solar Farm or renewable energy in general. We've been running these BBQ's monthly since November and so far more than \$1,700 has been raised for the RFS. Be sure to stop by and say hello!

BJCE Australia sponsor Gunning Arts Festival

BJCE Australia's Biala Wind Farm is proud to be a Silver sponsor of the community-led Gunning Arts Festival, which will be held on the 18th of April. With the theme of 'Celebrating Nature', the multi-event Festival will feature an impressive line-up of local talent. For bookings and further information, visit www.gunningartsfestival.com



About the Project

Biala Wind Farm is located approx. 6km south of Grabben Gullen on Grabben Gullen Road. It is owned by BJCE Australia, who also own Gullen Range Wind Farm and Gullen Solar Farm. Biala Wind Farm is proposed to have 31 turbines and was awarded a Development Approval in April 2017 by the NSW Planning Assessment Commission. It will connect to the electricity grid via underground electricity cables from the Gullen Range Wind Farm substation at Bannister. Construction of Biala Wind Farm will take approx. 18-months to complete. It is expected the wind farm will commence exporting energy to the national grid in July 2020 and will be completed in November 2020.

Current Project Timeline

We update this in each of our monthly newsletters

-	Roadworks to Range Road	BJCE to complete final seal and line marking by March 2020.
Area 1	Site entrances on Grabben Gullen Road	Complete
	Onsite civil and electrical works	Now to May 2020
	Delivery and erection of wind turbines	February 2020 to September 2020
	Commissioning of wind turbines	March 2020 to November 2020
Area 2	Substation extension	Now to March 2020
Area 3	Installation of underground electrical transmission line	Now to March 2020

To receive future newsletters sign up at bialawindfarm.com/subscription



Biala Wind Farm
1800 370 045 | bialawindfarm.com | info@bialawindfarm.com
Suite 3, Level 21, 1 York Street, Sydney, NSW, 2000