

BIALA WIND FARM

Newsletter

November 2019

We're keen to keep you informed on what's happening with Biala Wind Farm. We issue newsletters monthly, or more frequently if there is important news to share. Now we are in the construction phase, we will provide updates on the three main construction areas, as shown in the map below. To receive future newsletters via email, please sign up at bialawindfarm.com/subscription.

Area One

Biala Wind Farm site

Area One is the wind farm site, located to the west of Grabben Gullen Road.

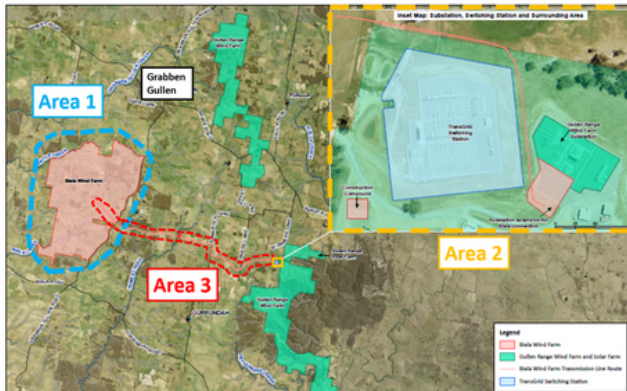
We have now made significant progress here with earthworks completed for 80% of the for access tracks and 21 out of the 31 wind turbine foundations. We have also poured concrete for the foundations at 15 of 31 turbine locations.

The next steps in Area One will be to continue putting down gravel for the access tracks and continue constructing the wind turbine foundations. To minimise the construction period duration, some low impact works may be undertaken on Saturday afternoons and Sundays, you may see our vehicles coming and going on those days.

Area Two

Extension to Gullen Range Wind Farm substation

The Gullen Range Wind Farm substation is located in Bannister. A new electrical transformer will be installed so the electricity from Biala Wind Farm can be transmitted to the electricity grid. We have prepared the foundation for the new transformer ready for concrete pouring. Concrete will be delivered from the wind farm over the next two weeks.



Project area map



Preparation of concrete foundations at the substation

Area Three

Electrical transmission line between Biala Wind Farm and Gullen Range Wind Farm

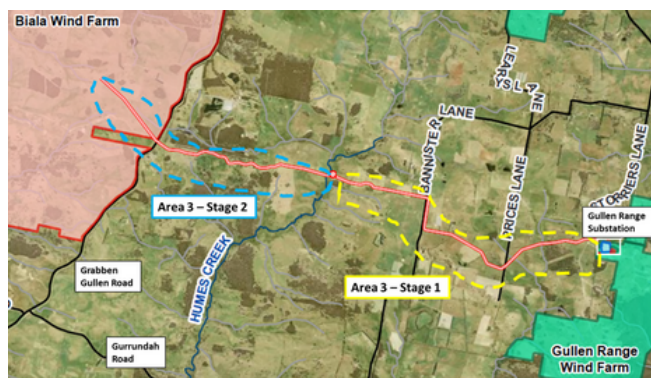
Biala Wind Farm will connect to the electricity grid via underground electricity cables from the Gullen Range Wind Farm substation at Bannister. The transmission line will be approximately 12km long and will consist of four electrical cables.

Our contractor is using a state-of-the-art trenching machine that simultaneously cuts a 30cm trench, lays the cable into the trench and then covers the cable with bedding sand. A front-end loader follows the trenching machine. It finishes filling the trench with soil and replaces the topsoil so the grass can revegetate.

The works will be done in two stages as shown below:

- **Stage 1** - cable laying between the Gullen Range Substation and the eastern side of Humes Creek.
- **Stage 2** - cable laying between the western side of Humes Creek and Biala Wind Farm.

We have started laying the first of four cables in Stage 1. During this stage, our trenching equipment will need to trench across Prices Lane and Bannister Lane four times. The first of these crossings has just been completed and the remaining three crossings will occur over the next two months. Crossings will be scheduled to avoid commuter times and school bus pick-up and drop off.



Area Three work stages



Trenching machinery for cable laying

When our equipment crosses these roads, vehicles cannot pass for a period of between 30 minutes to one hour. We will provide regular updates via our free text message service to let you know when the trenching across the road is likely to occur. To avoid inconvenience, please subscribe to our text message service. Although our cables will also cross Grabben Gullen Road, no closure will be required, as our cables will pass through ducts under the road surface.

Trucks carrying sand and other building materials are using Bannister and Prices Lane to access the transmission line route where it crosses them. Under an agreement with local Council, our trucks are required to proceed at 40km/h on the two lanes. You might have noticed our signage along the lanes.

Normal hours for these works are Mon-Fri 7am - 6pm and Sat 8am - 1pm. We have agreed with Council that some works may be undertaken outside of these hours. We will consult further with nearby landowners when such works are being undertaken. This will enable the cable laying to be completed more quickly and minimise the duration of the construction period.

Range Road Upgrade Works

These works are complete other than a final bitumen seal on the section of Range Road we have upgraded between Kialla Road and Grabben Gullen. Our Contractor has discussed the seal with Council and we've been waiting as a longer time between the first and final seals will result in a more durable surface for the future. We will apply the final seal to the junctions with Kialla and Grabben Gullen Roads and section at Bannister Hill in mid-December. Sealing of the remainder of the road will occur in February or March. Traffic controls will be in place during sealing with delays of approximately 5 minutes. We are currently discussing removal of the 40km/h speed limit with Council.

Community Consultative Committee (CCC)

The next CCC meeting will be held on Tuesday 28 January 2020 from 6pm - 8pm at Grabben Gullen Hall. If you have any questions about the project, members of the CCC can raise them on your behalf at these meetings. Minutes of all previous meetings are available on our website to read or download. If you are interested in observing a meeting, please register your interest with the independent chairperson, Nic Carmody on 0429 354 582 or email nic.carmody@bigpond.com

Monthly Community Fundraiser BBQ

On Thursday 14th November, we teamed up with Crookwell Men's Shed for a fundraising BBQ out the front of Crookwell IGA. The BBQ raised over \$900 for the bush fire appeal. It also allowed members of the community to chat with our team about renewable energy and the progress on Biala Wind Farm. The next community BBQ will be held on Thursday 12 December 2019.

About the Project

Biala Wind Farm is located approx. 6km south of Grabben Gullen on Grabben Gullen Road. It is owned by BJCE Australia, who also own Gullen Range Wind Farm and Gullen Solar Farm. Biala Wind Farm is proposed to have 31 turbines and was awarded a Development Approval in April 2017 by the NSW Planning Assessment Commission. It will connect to the electricity grid via underground electricity cables from the Gullen Range Wind Farm substation at Bannister. Construction of Biala Wind Farm will take approx. 18-months to complete. It is expected the wind farm will commence exporting energy to the national grid in July 2020 and will be completed in November 2020.

Text Message Service

If you live nearby and are interested in receiving construction or project updates by text message to your phone, please email us on info@bialawindfarm.com or call 1800 370 045 to leave a message and we will call you back to subscribe you for this service.

Current Project Timeline

We update this in each of our monthly newsletters

-	Roadworks to Range Road	Complete - subject to final seal
Area 1	Site entrances on Grabben Gullen Road	Complete
	Onsite civil and electrical works	Now to May 2020
	Delivery and erection of wind turbines	February 2020 to September 2020
	Commissioning of wind turbines	March 2020 to November 2020
Area 2	Substation extension	Now to March 2020
Area 3	Installation of underground electrical transmission line	Now to February 2020

To receive future newsletters sign up at bialawindfarm.com/subscription