

BIALA WIND FARM

Newsletter

December 2019

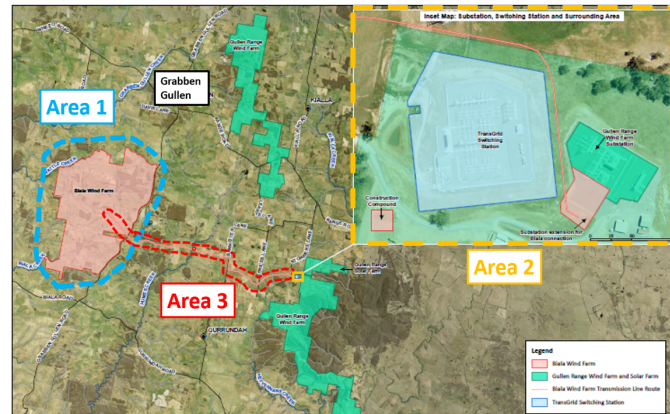
We're keen to keep you informed on what's happening with Biala Wind Farm. Now we are in the construction phase, we will provide updates on the three main construction areas, as shown in the map below. To receive future newsletters via email, please sign up at bialawindfarm.com/subscription.

Area One - Biala Wind Farm site

Area One is the wind farm site, located to the west of Grabben Gullen Road.

We have been placing gravel on the access tracks, with approximately 5.5km now completed. We have also poured the concrete for 23 of the wind turbine foundations. The next steps in Area One will be to continue putting down gravel for the access tracks and construct the final eight wind turbine foundations.

No machinery will be operational during the Christmas and New Year break, which is from Thursday 19th December 2019 to Monday 6th January 2020.



Project area map

Area Two - Extension to Gullen Range Wind Farm substation

The Gullen Range Wind Farm substation is located in Bannister. A new electrical transformer was delivered this month. When installed, it will allow electricity from Biala Wind Farm to be transmitted to the electricity grid. The transformer weighs over 95 tonnes. In order to unload such a heavy item, it was slid onto steel beams and then onto the concrete foundation that had previously been constructed for it. There is a picture of this below.

Area Three - Electrical transmission line between Biala Wind Farm and Gullen Range Wind Farm

Biala Wind Farm will connect to the electricity grid via underground electricity cables from the Gullen Range Wind Farm substation at Bannister.

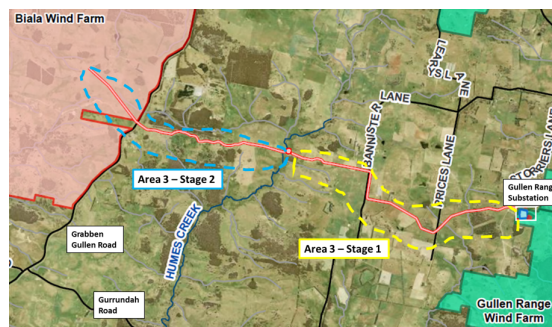
The transmission line will be approximately 12km long and will consist of four electrical cables which will be installed in two stages of works:

- **Stage 1** - cable laying between the Gullen Range substation and the eastern side of Humes Creek.
- **Stage 2** - cable laying between the western side of Humes Creek and Biala Wind Farm.

We have finished laying the first of the four cables in Stage 1 and are making good progress on the second cable. Our contractors working on this will finish for the year on Friday 20th December and will recommence on Monday 6th January 2020. In the new year, we will trench twice more across Prices Lane and Bannister Lane. Vehicles will not be able to pass for a period of between 30 minutes to one hour so crossings will be scheduled to avoid commuter times and school bus pick-up and drop off. We will advise of crossing times via our text messaging service.



Delivery of new electrical transformer



Area Three work stages



Sliding transformer onto the steel beams

Text Message Service

If you live nearby and are interested in receiving construction or project updates by text message to your phone, please email us on info@bialawindfarm.com or call 1800 370 045 to leave a message and we will call you back to subscribe you for this service.

Subcontractor and Accommodation Provider Opportunities

If you are a sub-contractor interested in taking part in the project or you are a local with accommodation you would like to offer wind farm staff, you can register your details on our website and we will pass your details on to our contractors.

Community Consultative Committee (CCC)

The next CCC meeting will be held on Tuesday 28 January 2020 from 6pm - 8pm at Grabben Gullen Hall. If you have any questions about the project, members of the CCC can raise them on your behalf at these meetings. Minutes of all previous meetings are available on our website to read or download. If you are interested in observing a meeting, please register your interest with the independent chairperson, Nic Carmody on 0429 354 582 or email nic.carmody@bigpond.com

BBQ Fundraiser with Grabben Gullen RFS

We recently teamed up with Grabben Gullen RFS for a fundraising BBQ out the front of Crookwell IGA. The BBQ raised over \$350 for the local RFS to support their ongoing initiatives. It also allowed members of the community to chat with our team about renewable energy and the progress on Biala Wind Farm. The next community BBQ will be held on Thursday 16th January 2020. BJCE would like to thank all those who stopped for a sausage, chatted with us and made donations to the Grabben Gullen Rural Fire Service.

Connecting Bannister Hall

BJCE Australia purchased a mobile phone booster for Bannister Hall. The booster ensures the community and visitors at the Hall have mobile coverage. This is also a bushfire assembly area for nearby residents so there are safety benefits too. We continually look for ways to help the communities where our projects operate.



Leo and Dimity enjoying the new mobile coverage at Bannister Hall.

Supporting Crookwell Bowling

BJCE Australia was delighted to sponsor the 2019 Crookwell Women's Open Fours and the Men's Triple Classic Bowling Tournament. Simon Zhao, Site Manager at Gullen Range Wind Farm attended the award ceremony and presented the women's competition winners. Congratulations to all the winners.

BJCE Australia supports the 2019 Relay for Life community celebrations

In November, BJCE Australia joined the 2019 Goulburn Relay For Life fundraising event, which raises money to help the fight against cancer. BJCE Australia's Derek Powell (Deputy General Manager) and Simon Zhao (Gullen Range Wind and Solar Farm's Site Manager) attended the event to support the amazing efforts of over 500 participants. Derek also enjoyed chatting with radio host, Banksy on Goulburn's 2GN radio show. BJCE Australia was delighted to be one of the major sponsors for the event.

About the Project

Biala Wind Farm is located approx. 6km south of Grabben Gullen on Grabben Gullen Road. It is owned by BJCE Australia, who also own Gullen Range Wind Farm and Gullen Solar Farm. Biala Wind Farm is proposed to have 31 turbines and was awarded a Development Approval in April 2017 by the NSW Planning Assessment Commission. It will connect to the electricity grid via underground electricity cables from the Gullen Range Wind Farm substation at Bannister. Construction of Biala Wind Farm will take approx. 18-months to complete. It is expected the wind farm will commence exporting energy to the national grid in July 2020 and will be completed in November 2020.

Current Project Timeline

We update this in each of our monthly newsletters

-	Roadworks to Range Road	Awaiting sign off from council. BJCE still to complete final seal and line marking.
Area 1	Site entrances on Grabben Gullen Road	Complete
	Onsite civil and electrical works	Now to May 2020
	Delivery and erection of wind turbines	February 2020 to September 2020
	Commissioning of wind turbines	March 2020 to November 2020
Area 2	Substation extension	Now to March 2020
Area 3	Installation of underground electrical transmission line	Now to February 2020

To receive future newsletters sign up at bialawindfarm.com/subscription