

# BIALA WIND FARM

## Newsletter

October 2019

We're keen to keep you informed on what's happening with Biala Wind Farm. We issue newsletters monthly, or more frequently if there is important news to share. Now we are in the construction phase, we will provide updates on the three main construction areas, as shown in the map below. To receive future newsletters via email, please sign up at [bialawindfarm.com/subscription](http://bialawindfarm.com/subscription).

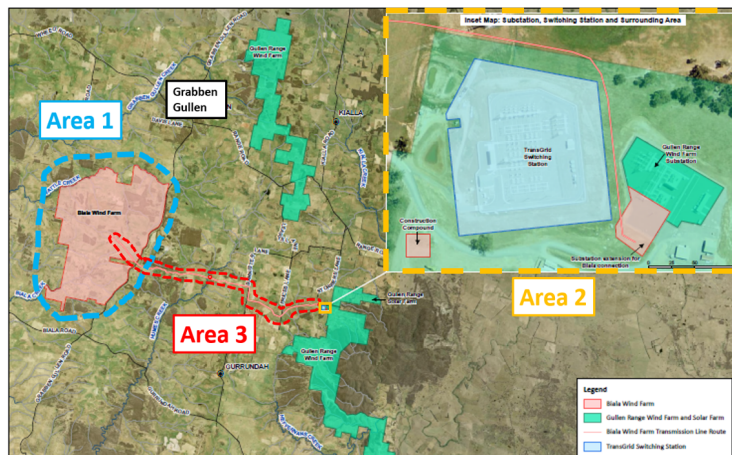
### Area One

#### Biala Wind Farm site

Area One is the wind farm site, located to the west of Grabben Gullen Road. Since commencing in August, we have made significant progress:

- Construction of the temporary construction compound is complete. This is the base for the contractors during the works.
- Construction of the temporary onsite concrete batching plant is complete. Concrete for the wind turbine foundations is mixed onsite.
- We have upgraded the two site entrances where the wind farm tracks intersect with Grabben Gullen Road (approximately 6km and 8.5km south of Grabben Gullen).
- Over 30% of access track earthworks has been completed. Earthworks for wind turbine foundations are underway on 13 out of 31 locations.
- Concrete foundations have been poured at six of the 31 turbine locations.

The next steps in Area One will be to continue constructing the access tracks and wind turbine foundations.



Project area map



Steel reinforcement bars for concrete foundation



Foundation mid concrete pour



Foundation concrete poured and finished

## Area Two

### Extension to Gullen Range Wind Farm substation

The Gullen Range Wind Farm substation is located in Bannister. A new electrical transformer will be installed so the electricity from Biala Wind Farm can be transmitted to the electricity grid.

The existing Gullen Range Wind Farm substation will continue to operate for the majority of these works. To ensure this can be done safely we have erected fencing inside the existing substation area to separate the new Biala extension works.

We have also started some excavation work in the vicinity of the existing substation. Vacuum trucks have been used to 'suck up' the soil and safely expose existing underground infrastructure so it is not impacted by the works. The next steps in Area Two will be to erect fencing around the new perimeter and construct footings for the new electrical equipment.

## Area Three

### Electrical transmission line between Biala Wind Farm and Gullen Range Wind Farm

Biala Wind Farm will connect to the electricity grid via underground electricity cables from the Gullen Range Wind Farm substation at Bannister. The transmission line will be approximately 12km long and will consist of four electrical cables.

So far works have been limited to survey work and some clearing of vegetation along the line. We have received delivery of large cable drums at the smaller temporary construction compound in Area two, ready for trenching and cable laying work. This work is expected to start in early November.

## Text Messages Service

If you live nearby and are interested in receiving construction or project updates by text message to your phone, please email us on [info@bialawindfarm.com](mailto:info@bialawindfarm.com) or call 1800 370 045 to leave a message and we will call you back to subscribe you for this service.

## Subcontractor and Accommodation Provider Opportunities

If you are a sub-contractor interested in taking part in the project or you are a local with accommodation you would like to offer wind farm staff, you can register your details on our website and we will pass your details on to our contractors.

## Range Road Upgrade

The primer seal has been completed on Range Road works meaning that the works are functionally complete. A final "two-coat" seal will be completed along the full section of the Range Road upgrade works at a time to be agreed with Council. We are currently liaising with Council regarding the lifting of the construction speed limits. Please continue to drive safely and abide by the speed limit until this process is complete.. BJCE Australia would like to thank the local community and all road users for their patience during the completion of roadworks on Range Road.

## Next Community Fundraiser BBQ announced

BJCE is hosting a BBQ fundraiser in Crookwell outside the IGA on **Thursday 14 November from 10am**. It's a great chance to grab a sausage and chat with a couple of our team members about renewable energy or the progress on Biala Wind Farm. We plan to host a community fundraiser BBQ each month, throughout the Biala Wind Farm construction phase, in partnership with local community groups. All proceeds raised will be donated back to the group we team up with. Community groups interested in partnering with Biala Wind Farm, please call 1800 370 045 to find out more information.

## Current Project Timeline

We update this in each of our monthly newsletters

## About the Project

Biala Wind Farm is located approximately 6km south of Grabben Gullen on Grabben Gullen Road. It is owned by BJCE Australia, who also own Gullen Range Wind Farm and Gullen Solar Farm. It is expected the wind farm will commence exporting energy to the national grid in July 2020 and will be completed in November 2020.

-	Roadworks to Range Road	Complete - subject to final seal
Area 1	Site entrances on Grabben Gullen Road	Complete - subject to line markings early November 2020
	Onsite civil and electrical works	Now to May 2020
	Delivery and erection of wind turbines	February 2020 to September 2020
	Commissioning of wind turbines	March 2020 to November 2020
Area 2	Substation extension	Now to March 2020
Area 3	Installation of underground electrical transmission	Now to February 2020

To receive future newsletters sign up at [bialawindfarm.com/subscription](http://bialawindfarm.com/subscription)