

BIALA WIND FARM

Newsletter

September 2019

We're keen to keep you informed on what's happening with Biala Wind Farm. We issue newsletters monthly, or more frequently if there is important news to share. Now we are in the construction phase, we will provide updates on the three main construction areas, as shown in the map below. To receive future newsletters via email, please sign up at bialawindfarm.com/subscription.

Area One

Biala Wind Farm site

Area One is the wind farm site, located to the west of Grabben Gullen Road. We started work here in August on the temporary compound which will be the contractor's base on site during construction. Works have included stripping and stockpiling top soil, earthworks to create a level surface, gravelling the surface and installing pre-fabricated buildings.

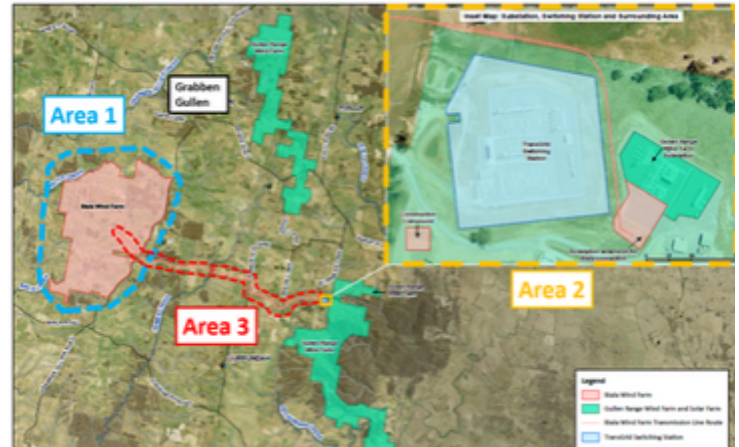
We have also been upgrading the two site entrances where the wind farm tracks intersect with Grabben Gullen Road. These intersections are 6km and 8.5km south of Grabben Gullen. The bulk of earthworks and gravelling has now been completed. In the next two weeks fencing and gates will be installed and a final spray seal will be implemented. Grabben Gullen Road may need to be reduced to a single lane in the area of the southern intersection for one or two days. A STOP-GO system will be in place.

We have also commenced earthworks on the wind farm access tracks and at the first two wind turbine locations. The next steps in Area One will be to continue constructing the access tracks and commence the concrete wind turbine foundations.

Area Two

The extension to Gullen Range Wind Farm substation

The Gullen Range Wind Farm substation is located in Bannister. A new electrical transformer will be installed there so the electricity from the Biala Wind Farm can be transmitted to the electricity grid. A smaller temporary compound has recently been established here for these works. Aside from receiving delivery of some materials required for the upgrade, no further works are expected here until October.



Project area map



Buildings installed in the compound



Earthworks for temporary work compound



Gravelling the Intersection

Area Three

The electrical transmission line between Biala Wind Farm and Gullen Range Wind Farm

Biala Wind Farm will connect to the electricity grid via underground electricity cables from the Gullen Range Wind Farm substation at Bannister. The transmission line will be approximately 12km long and will consist of four electrical cables. In August we undertook detailed surveys along the route. Cable laying works are scheduled to commence in mid-late October and will start at the eastern end of the route at the existing substation.



Stripping soil for access tracks

Range Road Upgrade

We have now completed 90% of the road upgrade. Two sets of traffic lights will be in place for the remaining upgrade works. One set is located at each end of Bannister Hill to ensure drivers can see the road works and slow down for the upgrades along the hill. The other set of lights will move along Range Road as we finalise the road upgrade works in each location. The works are expected to be complete in mid-October, providing weather is suitable for road sealing.

Text Messages Service

If you live nearby and are interested in receiving construction or project updates by text message to your phone, please email us on info@bialawindfarm.com or call 1800 370 045 to leave a message and we will call you back to subscribe you for this service.

Subcontractor and Accommodation Provider Opportunities

If you are a sub-contractor interested in taking part in the project or you are a local with accommodation you would like to offer wind farm staff, you can register your details on our website and we will pass your details on to our contractors.

Community Consultative Committee (CCC)

The next CCC meeting will be held on the Tuesday 22nd October 2019 from 5pm in the Grabben Gullen Community Hall. If you have any questions about the project, members of the CCC can raise them on your behalf at these meetings. Member contact details are available on our website. Minutes of all previous meetings are available on our website to read or download. If you are interested in observing a meeting, please register your interest with the independent chairperson, Nic Carmody on 0429 354 582 or email nic.carmody@bigpond.com

About the Project

Biala Wind Farm is located approximately 6km south of Grabben Gullen on Grabben Gullen Road. It is owned by BJCE Australia, who also own Gullen Range Wind Farm and Gullen Solar Farm. Biala Wind Farm is proposed to have 31 turbines and was awarded a Development Approval in April 2017 by the NSW Planning Assessment Commission. It will connect to the electricity grid via underground electricity cables from the Gullen Range Wind Farm substation at Bannister. Construction of Biala Wind Farm will take approximately 18-months to complete. It is expected the wind farm will commence exporting energy to the national grid in July 2020 and will be completed in November 2020.

Current Project Timeline

We update this in each of our monthly newsletters

-	Roadworks to Range Road	Now to mid-October 2019
Area 1	Site entrances on Grabben Gullen Road	Now to September 2019
	Onsite civil and electrical works	Now to May 2020
	Delivery and erection of wind turbines	February 2020 to September 2020
	Commissioning of wind turbines	March 2020 to November 2020
Area 2	Substation extension	October 2019 to March 2020
Area 3	Installation of underground electrical transmission line	October 2019 to February 2020

To receive future newsletters sign up at bialawindfarm.com/subscription