

# BIALA WIND FARM

## Newsletter

August 2019

We're keen to keep you informed on what's happening with Biala Wind Farm. We issue newsletters monthly, or more frequently if there is important news to share. To receive future newsletters via email, please sign up at [bialawindfarm.com/subscription](http://bialawindfarm.com/subscription).

### Construction Begins

The wind farm construction project can be split into three different areas. We will report on the areas individually in each newsletter.

#### Area One

**Biala Wind Farm site**

Area One is the wind farm site, located to the west of Grabben Gullen Road. We started work there three weeks ago, with soil being stripped for the temporary construction compound, which will be the contractor's base on site during the construction period.

The intersections of the wind farm tracks with Grabben Gullen Road are now being upgraded. The junctions are 6km and 8.5km south of Grabben Gullen. The northern junction will be upgraded first, followed by the southern one. This work is expected to take approximately 4-6 weeks to complete. Temporary traffic controls will be in place including a reduced speed limit. At certain times of the works, a stop/go system with one-way traffic flow will also be implemented. Our text message service will provide more up to date information on these works. Instructions on how to subscribe are below.

Next steps in Area One will be to start constructing the tracks to the wind turbine locations and excavating the ground where the concrete turbine foundations will be located.

#### Area Two

**The extension to Gullen Range Wind Farm substation**

The Gullen Range Wind Farm substation is located in Bannister. A new electrical transformer will be installed there so that the electricity from the Biala Wind Farm can be passed on to the electricity grid. Aside from the recent delivery of some materials required for the upgrade, no works are expected here until mid-September.

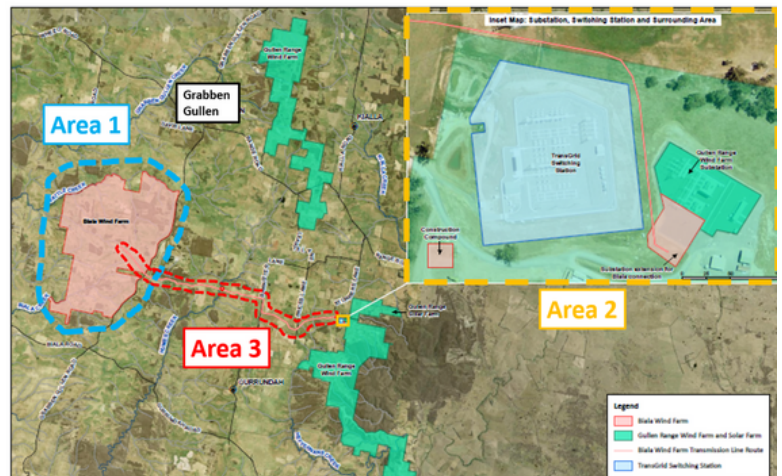
#### Area Three

**The electrical transmission line between Biala Wind Farm and Gullen Range Wind Farm**

Biala Wind Farm will connect to the electricity grid via underground electricity cables from the Gullen Range Wind Farm substation at Bannister. The transmission line will be approximately 12km long and will consist of four electrical circuits, connecting Biala Wind Farm to Gullen Range Wind Farm. We are currently undertaking detailed surveys to underpin this work which is scheduled to commence in mid-October.

### Heritage Areas Protected

Archaeologists, accompanied by Registered Aboriginal Parties (RAPs), visited the site again recently. Prior to construction activities, all known heritage sites within 150m from any proposed infrastructure or construction activity need to have temporary fencing installed around them to protect them against unplanned damage. This work has now been completed and these areas will be protected throughout the construction works. At the completion of construction, the exclusion zone fencing will be removed. Our heritage management plan can be read and downloaded from our website.



### COMMUNITY BBQ FUNDRAISER

Where: Crookwell IGA

When: Tuesday 3rd September | 9am

All proceeds raised will be donated to the Grabben Gullen RFS to support their ongoing initiatives



Biala Wind Farm

1800 370 045 | [bialawindfarm.com](http://bialawindfarm.com) | [info@bialawindfarm.com](mailto:info@bialawindfarm.com)

Suite 3, Level 21, 1 York Street, Sydney, NSW, 2000

## Community BBQ Fundraiser

BJCE has teamed up with Grabben Gullen Rural Fire Brigade (RFS) to host a BBQ fundraiser on Crookwell High Street (outside the IGA) on Tuesday 3rd September from 9am. All proceeds raised will be donated to the Grabben Gullen RFS to support their ongoing initiatives. It's a great chance to grab a sausage and chat with a couple of our team members about renewable energy or the progress on Biala Wind Farm.

## Range Road Upgrade

Over 3.5km of Range Road has now been sealed as part of the upgrade works. Work to replace the two causeways with culverts is now complete. At the request of Upper Lachlan Shire Council, we also upgraded two bus stop areas along Range Road. The bus stop areas have been widened and will be sealed. This will result in improved safety during school bus pickups and drop-offs.

Bad weather, including some snowfall, has slowed progress and we're now expecting to complete all of the works by late September 2019. Drivers are advised to consider alternative travel routes after rain or snow because sections where there is loose exposed gravel can be quite dirty when wet.

## Subcontractor and Accommodation Provider Opportunities

If you are a sub-contractor who is interested in taking part in the project, you can register your details on our website and we will pass your details on to the primary contractors.

As a new community initiative, we have set up a spot on our website where locals can put forward potential accommodation for wind farm staff. Perhaps you run a B&B or have a house on your property you'd like to rent. We will pass your details on to our contractors and they will contact you directly if they are interested.

## Community Consultative Committee (CCC)

The next CCC meeting will be held on the Tuesday 22nd October 2019 from 5pm. If you have any questions about the project, members of the CCC can raise them on your behalf at these meetings. Member contact details are available on our website. Minutes of all previous meetings are available on our website to read or download. If you are interested in observing a meeting, please register your interest with the independent chairperson, Nic Carmody on 0429 354 582 or email [nic.carmody@bigpond.com](mailto:nic.carmody@bigpond.com)

## About the Project

Biala Wind Farm is located approximately 6km south of Grabben Gullen on Grabben Gullen Road. It is owned by BJCE Australia, who also own Gullen Range Wind Farm and Gullen Solar Farm. Biala Wind Farm is proposed to have 31 turbines and was awarded a Development Approval in April 2017 by the NSW Planning Assessment Commission. It will connect to the electricity grid via underground electricity cables from the Gullen Range Wind Farm substation at Bannister. Construction of Biala Wind Farm will take approximately 18-months to complete. It is expected the wind farm will commence exporting energy to the national grid in July 2020 and will be completed in November 2020.

## Text Messages Service

If you live nearby and are interested in receiving construction or project updates please email us on [info@bialawindfarm.com](mailto:info@bialawindfarm.com) or call 1800 370 045 to leave a message and we will call you back to subscribe you for this service.

## Current Project Timeline

We'll update it in each of our monthly newsletters

Roadwork to Range Road	Now until September 2019
Site entrances on Grabben Gullen Road (Area 1)	August 2019 to September 2019
Onsite civil and electrical work (Area 1)	August 2019 to May 2020
Delivery and erection of wind turbines (Area 1)	February 2020 to September 2020
Commissioning of wind turbines (Area 1)	March 2020 to November 2020
Substation extension (Area 2)	September 2019 to March 2020
Installation of underground electrical transmission line (Area 3)	October 2019 to February 2020

To receive future newsletters sign up at [bialawindfarm.com/subscription](http://bialawindfarm.com/subscription)