

BIALA WIND FARM

Newsletter

July 2019

We're keen to keep you informed on what's happening with Biala Wind Farm. We issue newsletters monthly, or more frequently if there is important news to share. To receive future newsletters via email, please sign up at bialawindfarm.com/subscription.

Works to Commence on Wind Farm

BJCE is excited to announce works are planned to commence on the wind farm on Monday 29th July 2019. The wind turbines will be connected together and to Grabben Gullen road by unsealed tracks. The unsealed tracks will connect to Grabben Gullen Road in two locations. Our first works will be to upgrade the two intersections with Grabben Gullen Road and to build approximately 500m of track connecting the most northern junction to our temporary construction compound, as well as building the compound itself. This map shows the works and more detail about the work follows in the newsletter below.

The commencement of works follows the Range Road upgrade which we have been undertaking over the last two months and we expect to complete in early September 2019.

We will provide regular information about the works via our text messaging service. If you are not currently receiving these messages, you can contact us to subscribe.

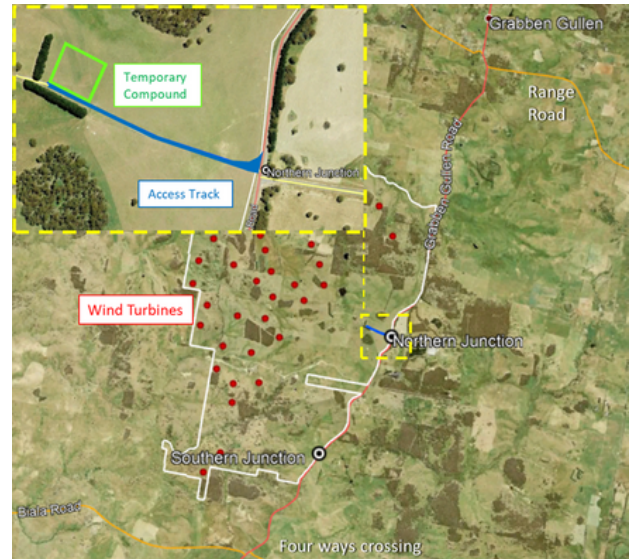


Image: Works to Commence on Wind Farm

Progress Update

As reported in our last newsletter, we recently appointed three primary contractors to construct the wind farm. These contractors are CATCON, Consolidated Power Projects Australia and Goldwind.

Since last month, we have undertaken a number of activities in preparation for construction to begin. The contractors have been producing detailed design drawings for the infrastructure which will be built on site. This includes electrical cabling, a temporary construction compound, wind turbine foundations and the access roads connecting the wind turbine locations and their associated drainage.

BJCE has appointed international engineering consultancy, AECOM, to assist with management of the wind farm construction. AECOM's experienced team will oversee the works of the three primary contractors, as well as providing technical reviews and inspections. One of the AECOM team will be based locally and will work permanently from the site until construction is completed.

Junctions on Grabben Gullen Road

The wind farm will be accessed from two different existing intersections along Grabben Gullen Road. In accordance with the wind farm's Traffic Management Plan, the intersections will need to be upgraded to allow for the increased traffic associated with the wind farm. This includes widening of Grabben Gullen Road at the intersections. The intersections are located 6 km and 8.5 km south of Grabben Gullen. CATCON has prepared design plans for the junctions and they have been approved by Council. Pending permit final approvals by Council, CATCON will commence the intersection upgrade works in the week commencing 29th July 2019. The works will take approximately six weeks to complete. Drivers will be required to adhere to a reduced speed limit throughout the upgrade areas. The safety of all road users is a top priority for us. For more information, please call 1800 370 045. Our Traffic Management Plan has been approved by NSW Department of Planning, Industry and Environment and can be downloaded from our website.

Subcontractor and Accommodation Provider Opportunities

All sub-contractor details, lodged through our website, have now been submitted to our primary contractors. If you are a sub-contractor who is interested in taking part in the project, you can still register your details on our website and we will pass your details on.

As a new community initiative, we have set up a spot on our website where locals can put forward potential accommodation for wind farm staff. Perhaps you run a B&B or have a house on your property you'd like to rent. We will pass your details on to our contractors and they will contact you directly if they are interested.

Text Message Service

Biala Wind Farm has implemented a text messaging service to communicate with nearby neighbours about any work we are doing on public roads and to give advance notice of large deliveries on their way to the site. If you live nearby and are interested in receiving construction updates please email us on info@bialawindfarm.com or call 1800 370 045 to leave a message and we will call you back to subscribe you for this service. You can opt out of receiving future SMS communication by replying UNSUBSCRIBE at any time.

Range Road Upgrade

We have completed approximately 35% of the road upgrade. Progress has been slightly delayed from our original estimates with completion now expected in early September.

One of the reasons for the delay is that ground conditions have been worse than expected. For instance, near Humes Creek, previously felled trees were found under the road, as well as a lot of unstable soil. This all had to be removed and new material brought in to ensure the new road is stable for the future. Here are some photos of this area.

About 1.1 km of Range Road has now been sealed. Works will now continue on the next section and further sealing is expected to recommence in two weeks. Drivers are advised to consider alternative travel routes after rain or snow because sections where there is loose exposed gravel can be quite dirty when wet.

At times work may be conducted on two sections of the road at the same time. This should help to reduce the overall construction time but may mean a second set of traffic lights needs to be used.



Image: Subgrade materials underground



Community Consultative Committee (CCC)

The next CCC meeting will be held on the 20th August 2019 from 5pm. If you have any questions about the project, members of the CCC can raise them on your behalf at these meetings. Member contact details are available on our website. Minutes of all previous meetings are available on our website to read or download. If you are interested in observing a meeting, please register your interest with the independent chairperson, Nic Carmody on 0429 354 582 or email nic.carmody@bigpond.com

About the Project

Biala Wind Farm is located approximately 6km south of Grabben Gullen on Grabben Gullen Road. It is owned by BJCE Australia, who also own Gullen Range Wind Farm and Gullen Solar Farm. Biala Wind Farm is proposed to have 31 turbines and was awarded a Development Approval in April 2017 by the NSW Planning Assessment Commission. It will connect to the electricity grid via underground electricity cables from the Gullen Range Wind Farm substation at Bannister. Construction of Biala Wind Farm will take approximately 18-months to complete. It is expected the wind farm will commence exporting energy to the national grid in July 2020 and will be completed in November 2020.

Current Project Timeline

We'll update it in each of our monthly newsletters

Roadwork to Range Road	Now until August 2019
Site entrances on Grabben Gullen Road	August 2019 to September 2019
Onsite civil and electrical work	July 2019 to April 2020
Delivery and erection of wind turbines	February 2020 to September 2020
Commissioning of wind turbines	March 2020 to November 2020

To receive future newsletters sign up at bialawindfarm.com/subscription