

BIALA WIND FARM

Newsletter

February 2019

We're keen to keep you informed on what's happening with Biala Wind Farm. We issue newsletters monthly, or more frequently if there is important news to share. To receive **future newsletters**, sign up at bialawindfarm.com/subscription.

Update on Construction Timeframes

Biala Wind Farm received approval for an electricity transmission line linking Biala Wind Farm to Gullen Range Wind Farm in January. Since then, we have been working hard to finalise arrangements to begin construction of the wind farm.

Two large contracts will be placed to build the wind farm. One for the supply and installation of the wind turbines and the other for the civil and electrical works. We are finalising these contracts now.

We are also getting ready to start the upgrade works to Range Road. We've finished the plans and these are currently being reviewed by Council. We are required to upgrade from Kialla Road junction to Grabben Gullen under the wind farm's Development Approval.

Our updated project timeline is on the back of this newsletter.

Traffic Management

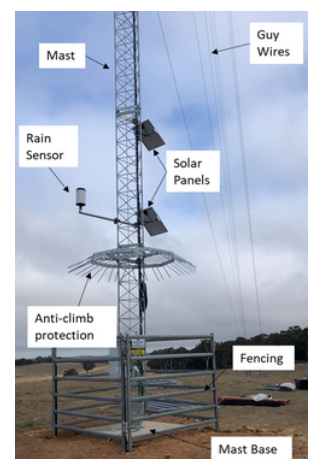
The traffic routes for Biala Wind Farm are set out in the Traffic Management Plan, which has been approved by the NSW Department of Planning. All over sized/over mass vehicle access to and from the site will be via the Hume Highway southern interchange through Goulburn, north along Crookwell-Goulburn Road and then bypassing the Crookwell township via Grange Road, Cullen Street, Kialla Road and Range Road, connecting to Grabben Gullen Road. All heavy vehicle access to and from the site will be via the Hume Highway to Gunning, then north along Grabben Gullen Road.

Text Message Service

Biala Wind Farm plans to implement a text messaging service to communicate with nearby neighbours about any work we are doing on public roads and to give advance notice of large deliveries on their way to the site. If you live nearby and are interested in receiving construction updates please email us on info@bialawindfarm.com or call 1800 370 045 to leave a message and we will call you back to register you for this service.

Met Mast Update

Four met masts were installed in early February. These are measuring wind speed and direction at various heights above the ground. Two masts, situated in the exact location of two of the wind turbines will be dismantled and removed or relocated once those turbines are constructed. The other two masts will remain erected for the life of the project. The masts are 110metres above ground level, which is the same height as the hub of the proposed wind turbines. We use the data from the masts to check the wind turbines are working properly once they are erected. We also provide some of the data to the Australian Electricity Market Operator to help them manage the electricity network.



To receive future newsletters sign up at bialawindfarm.com/subscription



Biala Wind Farm

1800 370 045 | bialawindfarm.com | info@bialawindfarm.com

Suite 3, Level 21, 1 York Street, Sydney, NSW, 2000

Gullen Range Community Enhancement Fund Workshop

BJCE Australia is hosting a FREE Grant Writing Workshop on **Monday 25th of March 2019 from 5pm -7pm**. BJCE Australia's Gullen Range Wind Farm Community Fund grants have opened and will close on the 12th of May 2019. The workshop aims to provide community groups with tips on how to prepare an application for a grant. The Community Fund, which is part of Gullen Range Wind Farm's Community Enhancement Program, provides grants to projects or initiatives that benefit the community within 10km of the wind farm. The Community Fund is administered by Upper Lachlan Shire Council. This workshop will help you identify the requirements of grant applications, what you will need to include in your response and how to write a convincing case for your project. **To register for the workshop visit www.gullenrangewindfarm.com.**

Biala Wind Farm will have a similar Community Fund of approximately \$90,000 per annum, which will commence once Biala Wind Farm is operational.

Crookwell Show Society - a long term agreement

BJCE Australia has announced a long-term agreement with the Crookwell Show Society. The agreement allows BJCE Australia to access sections of showground land to safely deliver over-sized components, during construction and for the life of Biala Wind Farm. This agreement provides long term financial support for the Society which allows the community to continue to benefit from the grounds.

Fun at the Crookwell Show

BJCE Australia attended the Crookwell Show on the 9th and 10th of February with an information stand and a face painter. The stand provided a face-to-face opportunity for the local community to discuss renewable energy and ask questions about our local wind farm projects. Children enjoyed having their faces painted by Rainbow Faces with proceeds being donated back to the Grabben Gullen community.

Community Consultative Committee (CCC)

The most recent Community Consultative Committee (CCC) meeting was held on Tuesday the 29th of January 2019 at the Gunning Council Chambers. If you have any questions about the project, members of the CCC can raise them on your behalf at these meetings. Member contact details are available on our website. The next CCC meeting will be held on the 28th of May 2019 from 5pm. If you are interested in observing, please register your interest with the independent chairperson, Nic Carmody, on 0429 354 582 or email nic.carmody@bigpond.com.

About the Project

Biala Wind Farm is located approximately 6km south of Grabben Gullen on Grabben Gullen Road. It is owned by BJCE Australia, who also own Gullen Range Wind Farm and Gullen Solar Farm. Biala Wind Farm is proposed to have 31 turbines and was awarded a Development Approval in April 2017 by the NSW Planning Assessment Commission. It will connect to the electricity grid via underground electricity cables from the Gullen Range Wind Farm substation at Bannister.

Proposed Project Timeline

Here is our current schedule.

We'll update it in each of our monthly newsletters.

Approvals, design work, surveys and met mast installations	Now until March 2019
Roadwork to Range Road	April 2019 to June 2019
Onsite civil and electrical work	July 2019 to April 2020
Delivery and erection of wind turbines	January 2020 to July 2020
Commissioning of wind turbines	March 2019 to July 2020