

BIALA WIND FARM

Newsletter

October 2018

We're keen to keep you informed on what's happening with Biala Wind Farm. We issue newsletters monthly, or more frequently if there is important news to share. To receive **future newsletters**, sign up at bialawindfarm.com/subscription.

Managing Impact

Our Environmental, Biodiversity, Cultural Heritage and Traffic Management plans have all been submitted to NSW Department of Planning and Environment for review. They will be posted on our website once they are finalised. These detailed plans set out how we will meet the requirements of our development approval during the construction of the project. We expect the plans to be finalised in the next month.

Community Consultative Committee

The September CCC meeting was postponed by the Chair as there were quite a few committee members who couldn't attend. The Chair has rescheduled the meeting for the 13th of November at 12pm. The CCC is currently looking for new members. If you are interested in attending a meeting as an observer or would like to become a committee member please contact the independent chairperson, Nic Carmody, on 0429 354 582 or nic.carmody@bigpond.com.

Aboriginal Heritage Surveys

In mid-October we performed an additional five days of heritage survey work on the project site. This involved a heritage consultant accompanied by Registered Aboriginal Parties (RAPs) surveying areas where it is expected that turbines, access tracks and cabling will be constructed. The findings of these surveys will be considered in the design of the layout to minimise the impact to any areas of importance. Some areas will be fenced off during construction to ensure they are not disturbed.

Transmission Line Update

In November 2017 we submitted a development application for an underground transmission line between Biala Wind Farm and Gullen Range Wind Farm. The Development Approval (DA) for the underground transmission line was referred to the Joint Regional Planning Panel (JRPP) by Upper Lachlan Shire Council. The JRPP reviewed the application on 14 March 2018 and requested more information from us. We submitted this additional information to the Council and it was exhibited from 17th April 2018 to 15th May 2018.

Upper Lachlan Shire Council has prepared an assessment report which has been submitted by Council to the JRPP. The JRPP have requested that report is subject to a peer review, to be completed before the JRPP sets a new date for a meeting to consider the application. That peer review is currently being undertaken by NSW Department of Planning and Environment.

The proposed underground line will transmit the electricity generated by Biala Wind Farm across to our existing substation at Gullen Range Wind Farm where it will be placed onto the electricity grid. We will continue to keep you updated.

To receive future newsletters sign up at bialawindfarm.com/subscription



Biala Wind Farm
1800 370 045 | bialawindfarm.com | info@bialawindfarm.com
Suite 3, Level 21, 1 York Street, Sydney, NSW, 2000

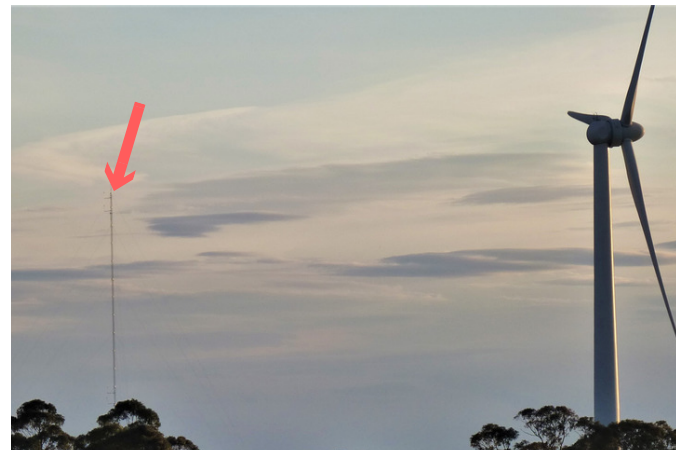
National Wind Farm Open Day

BJCE Australia is proud to have participated in the Clean Energy Council National Wind Farm Open Day on Sunday 21st of October. BJCE believes it's important for people to be able to visit wind farms so they can experience them first hand, rather than relying on what they might hear in the media or through other communication channels. Renewable energy is growing in Australia. So far in 2018, wind energy has contributed approximately \$2 billion in investment to the Australian economy and created over 2,000 jobs.



Progress on our Met Masts

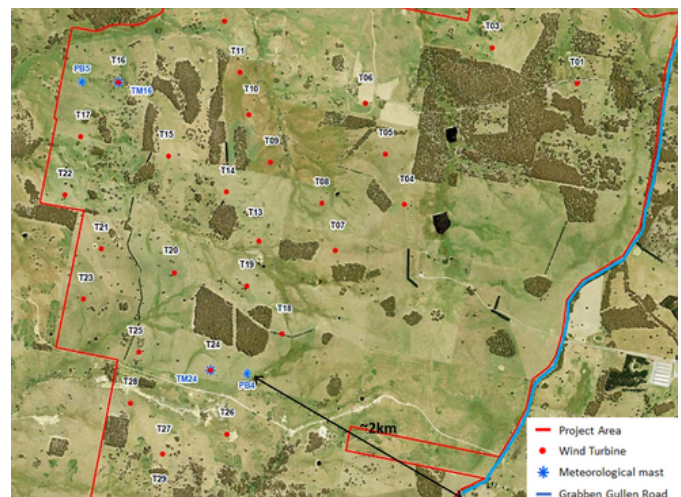
In our last newsletter we mentioned we had submitted an application to the NSW Department of Planning & Environment for a minor modification to the wind farm's Development Approval to allow four meteorological masts to be erected instead of the three previously planned. This minor modification has now been approved. Check our previous newsletter for more details. We don't plan to erect the masts until we know the outcome of our development application for the transmission line.



Met mast next to a turbine at Gullen Range Wind Farm.

Subcontractor and employment opportunities

Biala Wind Farm will be constructed by a large civil and electrical construction company. The process of selecting this company is still underway. If you are a local contractor or a local tradesperson who would like to be involved in the Biala Wind Farm, you can register your interest on our website. This information will be provided to the main construction contractor when appointed.



Current planned location of the masts.

About the project

Biala Wind Farm is located approximately 6km south of Grabben Gullen on Grabben Gullen Road. It is owned by BJCE Australia, who also own Gullen Range Wind Farm and Gullen Solar Farm. Biala Wind Farm is proposed to have 31 turbines and was awarded a Development Approval in April 2017 by the NSW Planning Assessment Commission.

Proposed Project Timeline

Approvals, design work, surveys	Now until December 2019
Roadwork to Kialla Road	Complete
Roadwork to Range Road	December 2018 to February 2019
Onsite civil and electrical work	January 2019 to September 2019
Delivery and erection of wind turbines	September 2019 to February 2020
Commissioning of wind turbines	November 2019 to March 2020