

BIALA WIND FARM

Newsletter

11 OCTOBER 2018

We're keen to keep you informed on what's happening with Biala Wind Farm. We will be issuing newsletters monthly, or more frequently if there is important news to share. To receive **future newsletters**, sign up at bialawindfarm.com/subscription.

A successful season for the Crookwell Devils

Last month, The Crookwell Green Devils defeated North Canberra Bears 22 - 16 to become the Premiers of the 2018 George Tooke Shield. Great work! Congratulations also to She Devils team and the junior teams as well. BJCE Australia has been a proud sponsor of the Crookwell Devils for the last three years with Gullen Range Wind Farm and Biala Wind Farm.

Clean Energy Council's Best Practice Charter for Renewable Energy Developments

BJCE Australia is delighted to be a founding signatory of the Clean Energy Council's Best Practice Charter for Renewable Energy Developments. The charter is a voluntary set of commitments to reflect our promise to develop and operate projects in a socially responsible way. To find out more visit gullenrangewindfarm.com

Managing Impacts

Our Environmental, Biodiversity, Cultural Heritage and Traffic Management plans have all been submitted to NSW Department of Planning and Environment for review. They will be posted on our website once they are finalised. These detailed plans set out how we will meet the requirements of our development approval during the construction of the project.

Road upgrades

We are required to upgrade Range Road between Kialla Road and Grabben Gullen Road as part of our project development. We are planning to start this work in late October or early November 2018. We will keep you updated when the timeframes are finalised. We have completed design work for the upgrade and it is being reviewed by Upper Lachlan Shire Council.

Community Consultative Committee

The September CCC meeting was postponed by the Chair as there were quite a few committee members who couldn't attend. The Chair is rescheduling the meeting with a date in late-October likely.

The CCC is currently looking for new members. If you are interested in attending a meeting as an observer or would like to become a committee member contact the independent chairperson, Nic Carmody, on 0429 354 582 or nic.carmody@bigpond.com.

About the Project

Biala Wind Farm is located approximately 6km south of Grabben Gullen on Grabben Gullen Road. It is owned by BJCE Australia, who also own Gullen Range Wind Farm and Gullen Solar Farm. Biala Wind Farm is proposed to have 31 turbines and was awarded a Development Approval in April 2017 by the NSW Planning Assessment Commission.

To receive future newsletters sign up at bialawindfarm.com/subscription



Biala Wind Farm

1800 370 045 | bialawindfarm.com | info@bialawindfarm.com

Suite 3, Level 21, 1 York Street, Sydney, NSW, 2000

Transmission Line Update

In November 2017 we submitted a development application for an underground transmission line between Biala Wind Farm and Gullen Range Wind Farm. The DA for the underground transmission line was referred to the Joint Regional Planning Panel (JRPP) by Upper Lachlan Shire Council. The JRPP reviewed the application on 14 March 2018 and requested more information from us. We submitted this additional information to the Council and it was exhibited from 17th April 2018 to 15th May 2018.

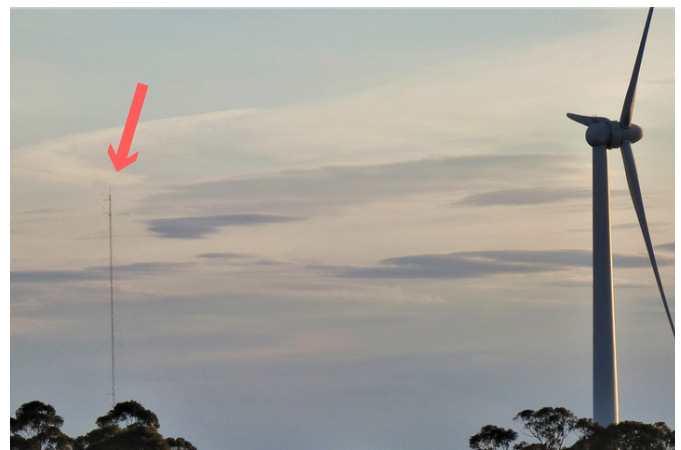
Upper Lachlan Shire Council has now prepared a final report which was submitted to the JRPP this week. Now that the JRPP has received this report, they will arrange a date to sit to further consider the transmission line development application. We will continue to keep you updated.

The proposed underground line will transmit the electricity generated by Biala Wind Farm across to our existing substation at Gullen Range Wind Farm where it will be placed onto the electricity grid.

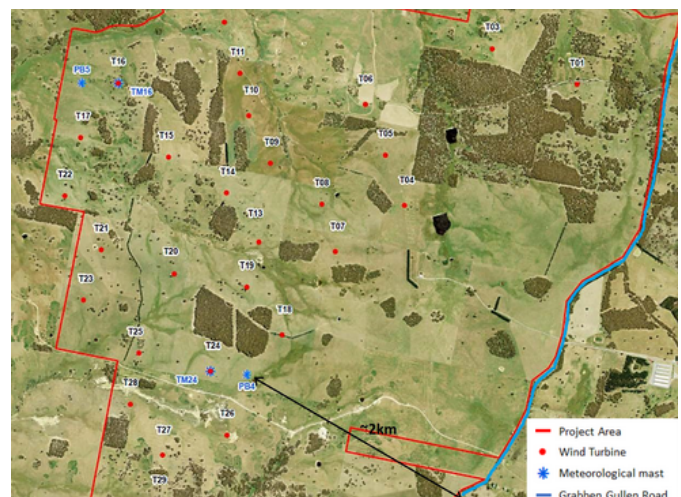
Update on Met Masts

You may be wondering how we're progressing with the meteorological masts we mentioned in our previous newsletters. The masts are used to verify the turbines are producing the power they are supposed to. The verification process is complicated and needs to be performed to a particular international standard. This standard requires us to use four met masts for Biala Wind Farm. Our Development Approval currently allows for only three met masts, so we have submitted an application for a minor modification to this approval to NSW Department of Planning & Environment to allow four masts to be erected. The height of the masts will remain the same.

The masts have a small base and use guy wires to support a lattice style tower. The planned locations have been chosen with consideration of environmental impacts. Note the masts labelled TM15 and TM24 are at the same location as two of the turbines. These two masts are temporary and will be taken down or relocated to another area of the site once the data gathering is complete, so the turbines can be erected. If you'd like to ask any questions about the met masts please get in touch.



Met mast next to a turbine at Gullen Range Wind Farm.



Current planned location of the masts.

Proposed Project Timeline

Here is our current schedule.
We'll update it in each of our monthly newsletters.

Approvals, design work, surveys	Now until November 2019
Roadwork to Kialla Road	Complete
Roadwork to Range Road	October to December 2018
Onsite civil and electrical work	December 2018 to July 2019
Delivery and erection of wind turbines	July 2019 to December 2019
Commissioning of wind turbines	September 2019 to December 2019